

RECOMMENDED SIRE DIRECTORY

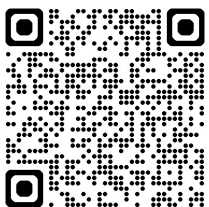
SPRING 2024



*'MARCHING
TOWARDS A
NEW FUTURE...'*



*WE'RE ALL ABOUT
HERD IMPROVEMENT'*



**CHECK OUT OUR
WEBSITE**



INDEX

"Helping you Breed a better future"

HOLSTEINS

MILK AUS	LITRES	PAGE
HUNTER	1016	11
ALADDIN P	825	17
HAKAN P	720	11
RAE-BAN RED	674	13
BALLISTIC	599	10
CARDHU	592	5
SUGARHIGH	547	19

COMPONENTS AUS	PROTEIN	FAT	PAGE
ALTAFASTPRIZE	18	58	6
ALADDIN P	30	35	17
LIONIZE PP	22	39	18
COINMAKER	23	38	4
TINAMBA	26	25	4
MR RIGHT	17	39	5
RAE-BAN RED	22	32	13

POLLED	PAGE	PAGE
LEYHIGH PP	15	HAKAN P 11
LUSTAPPLE PP	18	ALADDIN P 17
VITTORIA PP	14	ILLUMINATOR P 17
KARMA PP	15	CALVIN P 6
SAN PP	19	
ZEUS PP	14	
LIONIZE PP	18	

OVERALL TYPE	PTAT	OT	PAGE
PSG	3.63	108	10
HAKAN P	3.11	107	11
YARROWOOD	3.09	101	3
BALLISTIC	3.02	110	10
PHARAOH	2.91	-	9
NO DOUBT	2.88	105	3
LIFESTYLE RC	2.77	109	13

MAMARY SYSYEM	UDC	MS	PAGE
YARROWOOD	2.82	105	3
HAKAN P	2.60	112	11
DAWNING	2.48	105	7
PHARAOH	2.47	-	7
PARBO RC	2.39	105	7
PSG	2.31	101	10
BALLISTIC	2.30	114	10

CALVING EASE			PAGE
RAEBAN RED	1.4	US	13
THUNDER	1.5	US	18
NO DOUBT	1.7	US	3
EXCLUSIVE RED	1.8	US	12
CARDHU	1.9	US	5
DAWNING	1.9	US	7
LEYHIGH PP	1.9	US	15

BPI	BPI	HWI	PAGE
HI-PRAISE	541	522	18
TINAMBA	526	477	4
MR RIGHT	508	521	5
MONTEGO RC	489	553	9
TURBO	476	435	18
COINMAKER	472	475	4
ALTAFASTPRIZE	471	406	6

TPI	TPI	\$NM	PAGE
HI-PRAISE	3262	1154	18
HALO	3207	895	19
GRENADE	3154	1110	18
ALTAFASTPRIZE	3111	1076	6
SUGARHIGH	3067	1007	19
DAWNING	3060	893	7
HUNTER	3031	921	11

DAUGHTER FERT. /FERT INDEX	DF	FI	PAGE
HALO	118	1.3	19
MONTEGO	117	0.3	9
HI-PRAISE	113	2.2	18
ALADDIN	112	1.3	17
EXCLUSIVE RED	112	1.5	12
ZEUS	110	1.3	14
PARBO	110	0.7	7



How to Interpret Linear Proofs?

Don't miss out on available information. Scan this QR Code for Alta Genetics indepth "Cheat Sheet" of how to interpret the data in a bull proof.



AVAILABLE
FRESH
SEXED



BETA-CASEIN
A2A2



KAPA -CASEIN
BB



CALVING
EASE



RECOMMENDED
SHOW RING
SIRE



HOMOZYGOUS
POLLED



BALANCED
BREEDING



GOOD BULLS
GUIDE



ROBOT READY



What qualifies balanced breeding?

At NHD we expect a balanced breeding bull has the following traits: At least 50% of Stature for Strength and Body Depth, at least 75% of stature for Angularity, Pin rating sloped more than -0.2, Teats longer than -0.5, no negative Production in their country, no minus fertility index.

551HO06013

YARROWOOD

Eclipse Yarrawood ET

Perfect x Doc



Sire: Siemers Rengd Perfect ET
 Dam: Eclipse Doc Halina II IMP ET
 NOW OWNED BY MATT & NICOLA TEMPLETON

AUS Genomic Data 08/24 BPI 323

Milk	174	OT	101
Protein kg	19	0.27%	MS 105
Fat Kg	30	0.33%	FLC 101

HWI 294 ASI 177

Calving Ease	102	Cell Count	140
Survival	108	Mast. Res.	102
Daught Fert.	107	Heat Tol.	95

SI 601

AUS Proof

Milk Speed	102
Temp.	101
Likeability	104



RRP \$35

NHD Special \$28 + GST

06/2024 US Genomic Data Net Merit \$698 BB A2A2

Milk	931	81% R	Cheese M\$	713	Sire CE	2.3%
Fat	+69	+011%	SCS	+2.90	Gest. Len.	0
Protein	+50	+0.07%	Mastitis	+1.2	Fert. Index	+0.4
PL	+3.8		Liveability	-2.0	CCR	+0.8
DPR	+0.0		Heifer Liv.	+0.5	HCR	+1.6

Sexed Ultra + RRP \$75

NHD Sexed \$70 + GST

PTAT + 3.09 UDC +2.82 FLC +2.04 TPI +2925

			-1	1	2
Stature	+2.33	Tall			
Strength	+1.73	Strong			
Body Depth	+1.59	Deep			
Dairy Form	+1.58	Open Rib			
Rump Angle	-0.12	High			
Rump Width	+2.88	Wide			
Rear Leg SV	+0.43	Sickle			
Rear Leg RV	+3.13	Straight			
Foot Angle	+2.30	Steep			
Feet & Legs S	+2.18	High			
For Udder A	+3.12	Strong			
Rear Udder H	+3.96	High			
Rear Udder W	+3.95	Wide			
Udder Cleft	+2.41	Strong			
Udder Depth	+2.39	Shallow			
Front Teat P	+1.46	Close			
Rear Teat P	+2.07	Close			
Teat Length	+0.61	Long			

94HO21468

NO DOUBT

Ernest-Anthony No Doubt ET

Homecoming x Doc



Sire: AOT Homecoming ET
 Dam: S-S-I Doc Have Not 8783

AUS Genomic Data 08/24 BPI 339

Milk	241	OT	105
Protein kg	13	0.12%	MS 108
Fat Kg	39	0.42%	FLC 101

HWI 305 ASI 148

Calving Ease	103	Cell Count	147
Survival	109	Mast. Res.	105
Daught Fert.	106	Heat Tol.	98

US Proof

SI 544

AUS Proof



Milk Speed	102
Temp.	102
Likeability	104



RRP \$34

NHD Special \$28+ GST

08/2024 US Genomic Data Net Merit \$635 BB A1A2

Milk	+934	82% R	Cheese M\$	639	Sire CE	1.7%
Fat	+70	+0.13%	SCS	+3.17	Gest. Len.	-2
Protein	+43	+0.05%	Mastitis	+0.5	Fert. Index	+1.0
PL	+2.2		Liveability	+0.0	CCR	+1.0
DPR	-0.3		Heifer Liv.	+0.9	HCR	+2.8

Sexed RRP \$62

NHD Sexed \$55+ GST

PTAT + 2.88 UDC +2.15 FLC +0.88 TPI +2785

			-1	1	2
Stature	+2.09	Tall			
Strength	+1.32	Strong			
Body Depth	+1.86	Deep			
Dairy Form	+2.33	Open Rib			
Rump Angle	+0.53	Sloped			
Rump Width	+1.56	Wide			
Rear Leg SV	-0.01	Posty			
Rear Leg RV	+0.84	Straight			
Foot Angle	+1.59	Steep			
Feet & Legs S	+1.35	High			
For Udder A	+2.81	Strong			
Rear Udder H	+3.12	High			
Rear Udder W	+3.02	Wide			
Udder Cleft	+1.37	Strong			
Udder Depth	+1.69	Shallow			
Front Teat P	+1.10	Close			
Rear Teat P	+1.30	Close			
Teat Length	+0.07	Long			

COINMAKER

Gleestar Coin maker

Rocknroll x Kenobi

A2A2

CE

BB



Sire: Westcoast Rocknroll
Dam: Gleestar Kenobi Cutie 318 GP84

Sexed RRP \$ 58
NHD Sexed \$55+ GST

The All Rounder
+Teat Length

AUS Proof



RRP \$24

NHD Special \$22 + GST

BB A2A2

AUS Genomic Data 08/24 BPI 472 HWI 449 ASI 234 SI 828

Milk	21	Calving Ease	103	Cell Count	173	Milk Speed	99
Protein kg	23 0.42%	Survival	109	Mast. Res.	108	Temp.	100
Fat Kg	38 0.54%	Daught Fert.	111	Heat Tol.	95	Likeability	102

Aus Genomics 08/24 OT: 104 MS:104 DS:101 FLC: 103

Stature	101	Rear Leg Rear View	103
Angularity	96	Bone Quality	91
Muzzle Width	107	Udder Texture	95
Chest Width	110	Udder Depth	104
Body Depth	100	For Attachment	105
Pin Set	98	Rear Attach Height	102
Pin Width	100	Rear Attach Width	103
Loin Strength	98	Centre Ligament	102
Heel Depth	102	For Teat Place	102
Foot Angle	103	Rear Teat Place	100
Rear Set	97	Teat Length	104

Varley x ITLetsgo

TINAMBA

Wilara Tinamba ET



CE



Genetics AUSTRALIA



Sire: Carenda Varley
Dam: Wilara Letsgo Tiffany GP83

Sexed RRP \$ 56 +GST

High Australian Type from
the Australian proven 'Tiffany'
Family.

AUS Proof



RRP \$26

NHD Special \$24 + GST

AB A1A2

AUS Genomic Data 08/24 BPI 526 HWI 477 ASI 257 SI 955

Milk	-104	Calving Ease	103	Cell Count	168	Milk Speed	102
Protein kg	26 0.54%	Survival	109	Mast. Res.	108	Temp.	105
Fat Kg	35 0.57%	Daught Fert.	107	Heat Tol.	88	Likeability	106

Aus Genomics 08/24 OT: 109 MS:105 DS:103 FLC: 102

Stature	106	Rear Leg Rear View	103
Angularity	102	Bone Quality	99
Muzzle Width	102	Udder Texture	100
Chest Width	101	Udder Depth	103
Body Depth	102	For Attachment	104
Pin Set	104	Rear Attach Height	104
Pin Width	105	Rear Attach Width	100
Loin Strength	105	Centre Ligament	104
Heel Depth	103	For Teat Place	103
Foot Angle	110	Rear Teat Place	99
Rear Set	98	Teat Length	102

288HO00292

CARDHU

Regan-Danof Cardhu ET

Conway x Riveting



SIRE: Sandy-Valley R Conway ET
DAM: Regan-Danof R Claudia ET

RRP \$28 NHD Special \$26+ GST

08/2024 US Genomic Data Net Merit \$787 BB A2A2

Milk	+1135	82% R	Cheese M\$	802	Sire CE	1.9%
Fat	+61	+0.07%	SCS	+2.75	Gest. Len.	-1
Protein	+52	+0.06%	Mastitis	+3.6	Fert. Index	+2.0
PL	+4.7		Liveability	-0.2	CCR	+2.8
DPR	+1.4		Heifer Liv.	+0.8	HCR	+1.8

AUS Genomic Data 08/24 BPI 379

Milk	592	OT	103	
Protein kg	22	0.12%	MS	102
Fat Kg	23	-0.03%	FLC	101

HWI 369 ASI 151

Calving Ease	102	Cell Count	165
Survival	112	Mast. Res.	107
Daught Fert.	108	Heat Tol.	99

AUS Proof

SI 743

US Proof

Milk Speed	101
Temp.	101
Likeability	103



Sexed RRP \$70

NHD Sexed \$60+ GST

PTAT + 1.90 UDC +1.54 FLC +1.02 TPI +2880

			-1	1	2
Stature	+0.88	Tall			
Strength	+0.75	Strong			
Body Depth	+0.65	Deep			
Dairy Form	+0.78	Open Rib			
Rump Angle	+0.40	Sloped			
Rump Width	+1.30	Wide			
Rear Leg SV	+1.40	Sickled			
Rear Leg RV	+1.34	Straight			
Foot Angle	+0.55	Steep			
Feet & Legs S	+1.16	High			
For Udder A	+2.11	Strong			
Rear Udder H	+2.09	High			
Rear Udder W	+1.83	Wide			
Udder Cleft	+0.52	Strong			
Udder Depth	+1.33	Shallow			
Front Teat P	+0.56	Close			
Rear Teat P	+0.61	Close			
Teat Length	-0.48	Short			

MR RIGHT

Vala Mr Right

Almater x Bandares



Sire: Westcoast Almater
Dam: Vala Bandares Sheana ET

Sexed RRP \$ 55 +GST

RRP \$24 NHD Special \$22 + GST A2A2

AUS Genomic Data 08/24 BPI 508 HWI 521 ASI 199 SI 814

Milk	-56	Calving Ease	103	Cell Count	159	Milk Speed	104	
Protein kg	17	0.34%	Survival	112	Mast. Res.	106	Temp.	101
Fat Kg	39	0.6%	Daught Fert.	115	Heat Tol.	101	Likeability	105

Slopes Rumps & + Teat length

Aus Genomics 08/24 OT: 109 MS:107 DS:101 FLC: 105

Stature	100	Rear Leg Rear View	105
Angularity	95	Bone Quality	96
Muzzle Width	102	Udder Texture	98
Chest Width	108	Udder Depth	107
Body Depth	99	For Attachment	107
Pin Set	103	Rear Attach Height	107
Pin Width	103	Rear Attach Width	102
Loin Strength	102	Centre Ligament	102
Heel Depth	102	For Teat Place	106
Foot Angle	103	Rear Teat Place	102
Rear Set	101	Teat Length	101

AUS Proof

US Proof



97HO43023

Parfect x Altamighty P

CALVIN P

Forbe-Acres Calvin P



NHD EXCLUSIVE



SIRE: Siemers Rengd Parfect ET
DAM: Peak Cookie Mty-P 20508 ET
GDAM: Cookiecutter Sshot Honor VG85, MGD of Calvin-P (pictured)

RRP \$32

NHD Special \$28 + GST

08/2024 US Genomic Data			Net Merit \$898		BB	A1A2
Milk	+1271	83% R	Cheese M\$	915	Sire CE	2.1%
Fat	+91	-0.05%	SCS	+2.97	Gest. Len.	-1
Protein	+68	+0.01%	Mastitis	+2.6	Fert. Index	+1.8
PL	+3.9		Liveability	-2.5	CCR	+2.3
DPR	+0.5		Heifer Liv.	+0.2	HCR	+2.3

Sexed RRP \$60 +GST

NHD Sexed \$55 + GST

PTAT + 1.60		UDC +1.37		FLC +0.98		TPI +2998	
				-1		1	2
Stature	+1.35	Tall					
Strength	+0.63	Strong					
Body Depth	+0.51	Deep					
Dairy Form	+0.92	Open Rib					
Rump Angle	+0.56	Sloped					
Rump Width	+1.72	Wide					
Rear Leg SV	+1.12	Sickled					
Rear Leg RV	+0.56	Straight					
Foot Angle	+0.51	Steep					
Feet & Legs S	+1.17	High					
For Udder A	+1.72	Strong					
Rear Udder H	+1.94	High					
Rear Udder W	+2.05	Wide					
Udder Cleft	+0.99	Strong					
Udder Depth	+1.32	Shallow					
Front Teat P	+0.44	Close					
Rear Teat P	+1.10	Close					
Teat Length	+1.13	Short					

Heterozygous Polled Sire
Slopes Rumps & + Teat length

US Proof



011HO16461

AltaGadzook x Pursuit

ALTAFASTPRIZE

Peak Altafastprize ET



Sire: Peak AltaGadzook ET
Dam: Peak Mndln Prsut 82166 ET

RRP \$45

NHD Special \$28 + GST

08/2024 US Genomic Data			Net Merit \$1076		BB	A1A2
Milk	+791	80% R	Cheese M\$	\$1105	Sire CE	2.2%
Fat	+119	+0.14%	SCS	+2.67	Gest. Len.	-2
Protein	+63	+0.34%	Mastitis	+2.8	Fert. Index	+0.8
PL	+5.1		Liveability	+2.0	CCR	+1.2
DPR	+0.1		Heifer Liv.	+0.0	HCR	+0.4

Sexed RRP \$55 +GST

PTAT + 1.42		UDC +1.36		FLC +0.03		TPI +3111	
				-1		1	2
Stature	+1.18	Tall					
Strength	+0.56	Strong					
Body Depth	+1.50	Deep					
Dairy Form	+0.60	Open Rib					
Rump Angle	+0.99	Sloped					
Rump Width	+1.35	Wide					
Rear Leg SV	-0.09	Posty					
Rear Leg RV	+0.14	Straight					
Foot Angle	+0.46	Steep					
Feet & Legs S	+0.31	High					
For Udder A	+1.37	Strong					
Rear Udder H	+1.64	High					
Rear Udder W	+2.39	Wide					
Udder Cleft	+1.10	Strong					
Udder Depth	+0.92	Shallow					
Front Teat P	+1.07	Close					
Rear Teat P	+1.38	Close					
Teat Length	-0.01	Short					

AUS Genomic Data 08/24 BPI 471

Milk	-251	OT	99	
Protein kg	18	0.48%	MS	99
Fat Kg	58	1%	FLC	103

HWI 406

ASI 267

Calving Ease	103	Cell Count	173
Survival	108	Mast. Res.	108
Daught Fert.	107	Heat Tol.	96

US Proof

SI 789

AUS Proof



Milk Speed	102
Temp.	100
Likeability	103



0200HO12699

Ranger-RED x Lambda

PARBO RC

Positive Semen fertility!

CE

BB



Siemers Parbo ET



SIRE: 3Star OH Ranger Red ET

DAM:

Siemers LMDA Paris 27856 ET EX91

AUS Genomic Data 08/24 BPI 370

Milk	153	OT	104
Protein kg	5	0.02%	MS 105
Fat Kg	25	0.26%	FLC 97

HWI 415

ASI 74

Calving Ease	103	Cell Count	165
Survival	112	Mast. Res.	109
Daught Fert.	110	Heat Tol.	102

US Proof

SI 617

AUS Proof



Milk Speed	101
Temp.	102
Likeability	104



RRP \$32

NHD Special \$28 + GST

08/2024 US Genomic Data Net Merit \$820 BB A1A2

Milk	+1415	82% R	Cheese M\$	826	Sire CE	2.2%
Fat	+51	-0.01%	SCS	+2.85	Gest. Len.	-1.8
Protein	+49	+0.02%	Mastitis	+1.5	Fert. Index	+0.7
PL	+6.0		Liveability	+2.7	CCR	+1.6
DPR	+0.1		Heifer Liv.	-0.2	HCR	+2.9

Sexed RRP \$60

NHD Sexed \$58 + GST

PTAT + 2.53 UDC +2.39 FLC +1.34 TPI +2877

			-1	1	2
Stature	+1.61	Tall			
Strength	+0.50	Strong			
Body Depth	+0.72	Deep			
Dairy Form	+2.19	Open Rib			
Rump Angle	+1.16	Sloped			
Rump Width	+2.67	Wide			
Rear Leg SV	+0.36	Sickle			
Rear Leg RV	+1.84	Straight			
Foot Angle	+1.77	Steep			
Feet & Legs S	+1.49	High			
For Udder A	+2.59	Strong			
Rear Udder H	+3.31	High			
Rear Udder W	+3.53	Wide			
Udder Cleft	+1.21	Strong			
Udder Depth	+1.74	Shallow			
Front Teat P	+1.47	Close			
Rear Teat P	+1.23	Close			
Teat Length	+0.27	Long			

0200HO12851

Holysmokes x Parfect

DAWNING

Progenesis Dawning



CE



SIRE: Cookiecutter Holysmokes ET

DAM:

Sheland Duke Daylily VG85-2YR-USA

AUS Genomic Data 08/24 BPI 384

Milk	-94	OT	103
Protein kg	12	0.28%	MS 105
Fat Kg	44	0.69%	FLC 100

HWI 329

ASI 180

Calving Ease	103	Cell Count	164
Survival	108	Mast. Res.	110
Daught Fert.	107	Heat Tol.	99

US Proof

SI 561

AUS Proof



Milk Speed	100
Temp.	102
Likeability	103



RRP \$30

NHD Special \$28 + GST

08/2024 US Genomic Data Net Merit \$893 AB A1A2

Milk	+820	82% R	Cheese M\$	917	Sire CE	1.9%
Fat	+103	+0.27%	SCS	+2.70	Gest. Len.	-1
Protein	+55	+0.11%	Mastitis	+3.5	Fert. Index	+0.6
PL	+4.0		Liveability	-1.2	CCR	+0.7
DPR	-0.2		Heifer Liv.	+0.1	HCR	+0.6

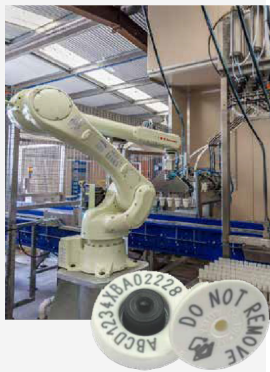
Sexed RRP \$55

NHD Sexed \$50 + GST

PTAT + 2.20 UDC +2.48 FLC +1.15 TPI +3060

			-1	1	2
Stature	+1.13	Tall			
Strength	+0.91	Strong			
Body Depth	+0.59	Deep			
Dairy Form	+0.93	Open Rib			
Rump Angle	+0.37	Sloped			
Rump Width	+0.93	Wide			
Rear Leg SV	+0.22	Sickle			
Rear Leg RV	+1.63	Straight			
Foot Angle	+1.19	Steep			
Feet & Legs S	+1.22	High			
For Udder A	+2.96	Strong			
Rear Udder H	+3.16	High			
Rear Udder W	+2.90	Wide			
Udder Cleft	+1.23	Strong			
Udder Depth	+2.24	Shallow			
Front Teat P	+0.99	Close			
Rear Teat P	+1.26	Close			
Teat Length	+0.26	Long			

ELECTRONIC I.D. HERD TESTING



- Herd Testing is made simple with a stream line Identification Process using NLIS Tags.
- Improves accuracy of cow identification whilst reducing labour intensity
- Our Electronic ID process works cohesively with Mistro, Jantec, Easy Dairy and iDairy.
- The Electronic ID process uses radio frequency antenna (available from NHD) to read NLIS tags at shed entry.

For Regions that can use ROBOT SORTING

Accurately Sorted with Robot Automation.

Option 1

- ID read at Shed Entry
- Palm unit displays cow's herd test ID on the hand held screen.
- Pre-printed barcoded on flask lid is scanned. Which inks cow herd test number to milk sample

Option 2

- ID read at Shed Entry
- Barcode Sticker pre-printed with Cow Herd Test Number.
- Appropriate Cow ID Sticker placed on flask lid, by farmer to correct milk sample.
- Robot sorts and matches the samples at the NHD lab.

For Regions that can not use ROBOT SORTING

Accurately Sorted using data sheets for sorting purposes.

Option 3

- ID read at Shed Entry
- Sticker is pre-printed with cow Herd Test Number and flask position in creats.
- Farmers place the correct sample flask in designated place order, to ensure samples are matched with their barcode.

Herd Test Options:

Standard Test- Milk Samples taken AM & PM for most accurate results.

Single Test- Sample taken AM or PM. This requires the provision of 24 hr vat volume reading or milk meter data.

Spot Test- SCS Test of milk OR Full Spot test which does SCS, Fat, protein and volume.

HERD TESTING FOR HERD IMPROVEMENT



Benefits of Herd Testing



- Somatic Cell Count- Stay in Premium Milk Production.
- Dry Off, Culling, and re-joining decisions made more accurately.
- Manage Mastitis cows
- Preg-test in the milk
- Manage Overall herd performance
- Profitability and Efficiency of individual animals made clear.
- Production Index (PI) ranks your cows productivity within herd.
- Identify problem cows and potential health issues via individual production patterns.

Know your Mastitis

Test individual cows or vat samples for bacteria strains that are impacting your herd.

Treat mastitis head on with an exact determined strain of bacteria causing your herd grief. And avoid overuse of expensive drugs.

in potentially 24hrs

28 Day Blood Pregnancy Testing

- A blood sample is collected from the cow to be tested by trained NHD staff
- on centre,
- This sample can be taken by Farmer or our trained NHD staff members.
- **Ideal for Beef & Dry heifers.**



PREGNANCY TESTING EFFICIENT & ACCURATE

Why Preg Test via milk?

- An a non-invasive diagnosis which confirms pregnancy as early as 28 days post-breeding.
- Reduces animal handling and reduces labour simply by ticking the Preg Test option in your herd test.

Farmers can pick and choose which cows they wish to herd test by simply selecting their COW ID so that their sample is kept for pregnancy testing. It is as simple as highlighting the cow number on the Herd Test paper work. The pregnancy testing is then performed by our trained NHD staff on centre.

Farmer Management

- Cow must be 60 days post calving
- Cow must be 28 days post joining.
- NHD must be notified several days prior to Herd testing that you expect to Preg Test via the milk.

Quality Assurance



Quality Data



Your Herd, Our Commitment

AGRPharaoh

PHARAOH

Lorita Pharaoh ET

Dynasty x Hanans



A2A2

BB



SIRE: Kings-Ransom Dynasty ET

DAM:

Lorita Hanans Duchess

Great Udder Traits in comparison to Stature Rating.

US Proof



RRP \$35

NHD Special \$32+ GST

08/2024 US Genomic Data Net Merit \$788 BB A2A2

Milk	+765	79% R	Cheese M\$	809	Sire CE	2.5%
Fat	+91	+0.23%	SCS	+2.84	Gest. Len.	-0
Protein	+56	+0.12%	Mastitis	+1.2	Fert. Index	+0.3
PL	+4.2		Liveability	-1.6	CCR	+0.6
DPR	-0.4		Heifer Liv.	+0.6	HCR	+1.7

Sexed RRP \$80

NHD Sexed \$65 + GST

PTAT +2.91 UDC +2.47 FLC +1.64 TPI +2998

			-1	1	2
Stature	+2.17	Tall			
Strength	+1.16	Strong			
Body Depth	+1.29	Deep			
Dairy Form	+1.79	Open Rib			
Rump Angle	+0.00	Sloped			
Rump Width	+2.56	Wide			
Rear Leg SV	-0.01	Posty			
Rear Leg RV	+2.31	Straight			
Foot Angle	+2.07	Steep			
Feet & Legs S	+1.87	High			
For Udder A	+3.15	Strong			
Rear Udder H	+3.31	High			
Rear Udder W	+3.14	Wide			
Udder Cleft	+1.74	Strong			
Udder Depth	+2.30	Shallow			
Front Teat P	+1.83	Close			
Rear Teat P	+1.82	Close			
Teat Length	+0.29	Long			

0200HO12719

MONTEGO RC

Novum Montego RC

Ranger Red x Alcové

A2A2



SIRE: 3Star OH Ranger RED

DAM:

Novum Mercer Alcové 6557 GP 83-2YR CAN

AUS Genomic Data 08/24 BPI 489

Milk	75	OT	109
Protein kg	7	0.1%	MS 105
Fat Kg	34	0.44%	FLC 102

HWI 553

ASI 112

Calving Ease	102	Cell Count	169
Survival	114	Mast. Res.	111
Daught Fert.	117	Heat Tol.	107

US Proof

SI 743

AUS Proof



Milk Speed	101
Temp.	102
Likeability	104



RRP \$28

NHD Special \$26+ GST

08/2024 US Genomic Data Net Merit \$636 AB A2A2

Milk	+831	81% R	Cheese M\$	647	Sire CE	2.4%
Fat	+65	+0.13%	SCS	+2.68	Gest. Len.	-2
Protein	+34	+0.03%	Mastitis	+2.3	Fert. Index	+0.3
PL	+4.3		Liveability	+1.6	CCR	+0.8
DPR	+0.0		Heifer Liv.	-0.3	HCR	+0.4

Sexed RRP \$55

NHD Sexed \$53 + GST

PTAT +2.10 UDC +1.86 FLC +0.76 TPI +2751

			-1	1	2
Stature	+1.87	Tall			
Strength	+1.44	Strong			
Body Depth	+1.19	Deep			
Dairy Form	+0.75	Open Rib			
Rump Angle	+1.25	Sloped			
Rump Width	+1.49	Wide			
Rear Leg SV	+1.09	Sickle			
Rear Leg RV	+1.00	Straight			
Foot Angle	+1.10	Steep			
Feet & Legs S	+1.16	High			
For Udder A	+2.53	Strong			
Rear Udder H	+2.71	High			
Rear Udder W	+2.30	Wide			
Udder Cleft	+0.51	Strong			
Udder Depth	+2.22	Shallow			
Front Teat P	+0.84	Close			
Rear Teat P	+0.01	Close			
Teat Length	+0.21	Long			

0200HO13152

Bullseye x Alligator

BALLISTIC

Fraeland Ballistic



Backed by Australia's own Fairvale Bonnie Family

RRP \$32

NHD Special \$28 + GST



SIRE: MB-Luckylady Bullseye
 DAM: Fraeland Alligator Bombay VG87 2YR Old Cow

AUS Genomic Data 08/24 BPI 274

Milk	599	OT	110
Protein kg	8	-0.15%	MS 114
Fat Kg	25	-0.01%	FLC 102

HWI 253 ASI 57

Calving Ease	102	Cell Count	161
Survival	111	Mast. Res.	107
Daught Fert.	101	Heat Tol.	102

US Proof

SI 468

AUS Proof



Milk Speed	100
Temp.	102
Likeability	105



08/2024 US Genomic Data Net Merit \$348 AE A1A2

Milk	+882	80% R	Cheese M\$	348	Sire CE	2.2%
Fat	+44	+0.04%	SCS	+2.76	Gest. Len.	-0
Protein	+18	-0.04%	Mastitis	+2.4	Fert. Index	+0.5
PL	+1.9		Liveability	-3.2	CCR	+0.4
DPR	-0.5		Heifer Liv.	+0.9	HCR	+4.0

PTAT + 3.02 UDC +2.30 FLC +0.76 TPI +2543

			-1	1	2
Stature	+2.65	Tall			
Strength	+1.46	Strong			
Body Depth	+1.91	Deep			
Dairy Form	+2.44	Open Rib			
Rump Angle	-0.47	High			
Rump Width	+2.72	Wide			
Rear Leg SV	+1.51	Sickled			
Rear Leg RV	+1.09	Straight			
Foot Angle	+1.22	Steep			
Feet & Legs S	+1.37	High			
For Udder A	+2.70	Strong			
Rear Udder H	+3.58	High			
Rear Udder W	+3.56	Wide			
Udder Cleft	+1.73	Strong			
Udder Depth	+2.00	Shallow			
Front Teat P	+0.58	Close			
Rear Teat P	+0.56	Close			
Teat Length	+0.19	Long			

515HO00448

Davinci x Doc

PSG

Dgf Psg

BB



A2A2



STgenetics

Just like his Sire, but A2A2 BB



SIRE: Eba Davinci
 DAM: Dgf Magalia VG85

AUS Genomic Data 08/24 BPI 374

Milk	102	OT	108
Protein kg	17	0.27%	MS 110
Fat Kg	32	0.41%	FLC 107

HWI 299 ASI 174

Calving Ease	101	Cell Count	156
Survival	111	Mast. Res.	108
Daught Fert.	103	Heat Tol.	99

US Proof

SI 619

AUS Proof



Milk Speed	101
Temp.	101
Likeability	104



RRP \$30

NHD Special \$29 + GST

08/2024 US Genomic Data Net Merit \$484 BB A2A2

Milk	+590	80% R	Cheese M\$	500	Sire CE	2.3%
Fat	+54	+0.12%	SCS	+2.89	Gest. Len.	+0
Protein	+42	+0.09%	Mastitis	+0.6	Fert. Index	+0.0
PL	+2.2		Liveability	-1.3	CCR	-0.2
DPR	-0.3		Heifer Liv.	+0.8	HCR	+1.4

Sexed Ultra + RRP \$65

NHD Sexed \$63+ GST

PTAT + 3.63 UDC +2.31 FLC +1.74 TPI +2750

			-1	1	2
Stature	+3.47	Tall			
Strength	+2.09	Strong			
Body Depth	+2.86	Deep			
Dairy Form	+2.99	Open Rib			
Rump Angle	+0.62	Sloped			
Rump Width	+3.17	Wide			
Rear Leg SV	+0.31	Sickled			
Rear Leg RV	+2.48	Straight			
Foot Angle	+2.37	Steep			
Feet & Legs S	+2.30	High			
For Udder A	+2.90	Strong			
Rear Udder H	+3.37	High			
Rear Udder W	+3.63	Wide			
Udder Cleft	+2.15	Strong			
Udder Depth	+2.27	Shallow			
Front Teat P	+2.31	Close			
Rear Teat P	+2.31	Close			
Teat Length	+0.00	long			

515HO00498

Esquire x Perfect

HUNTER

Duckett Esquire Hunter

A2A2

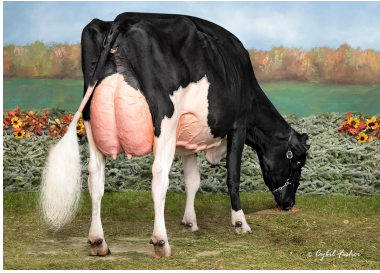
CE

STgenetics

Grand Son From the Million Dollar SSI Doc Have Not 8784 EX95

RRP \$30

NHD Special \$28 + GST



08/2024 US Genomic Data Net Merit \$921 A2A2

Milk	+2270	79% R	Cheese M\$	929	Sire CE	2.1%
Fat	+73	-0.05%	SCS	+2.75	Gest. Len.	-1
Protein	+74	+0.01%	Mastitis	+2.3	Fert. Index	+1.3
PL	+5.9		Liveability	-0.2	CCR	+2.0
DPR	+0.0		Heifer Liv.	+0.4	HCR	+2.0

Sexed Ultra +RRP \$70

NHD Sexed \$68+ GST

PTAT + 2.05 UDC +1.51 FLC +1.30 TPI +3031

SIRE: Sandy-Valley Esquire

DAM: Duckett Paftect Hallie

GDAM: SSI Doc Have Not 8784 EX95 (pictured)

AUS Genomic Data 08/24

Milk	1016	
Protein kg	29	-0.18%
Fat Kg	31	0.03%

BPI 341 HWI 297 ASI 179

Calving Ease	104	Cell Count	154
Survival	109	Mast. Res.	108
Daught Fert.	105	Heat Tol.	93

SI 746

US Proof

Milk Speed	101
Temp.	101
Likeability	104



Stature	+2.21	Tall			
Strength	+1.10	Strong			
Body Depth	+1.16	Deep			
Dairy Form	+1.87	Open Rib			
Rump Angle	+0.76	Sloped			
Rump Width	+2.12	Wide			
Rear Leg SV	+0.31	Sickled			
Rear Leg RV	+2.13	Straight			
Foot Angle	+1.07	Steep			
Feet & Legs S	+1.58	High			
For Udder A	+1.53	Strong			
Rear Udder H	+2.36	High			
Rear Udder W	+2.63	Wide			
Udder Cleft	+1.35	Strong			
Udder Depth	+1.59	Shallow			
Front Teat P	+0.38	Close			
Rear Teat P	+0.84	Close			
Teat Length	+0.53	Long			

7HO16493

Wolfgang P x Luster P

HAKAN P

Siemers Wolf Hakan-P-ET

Positive Semen fertility!



A2A2



WORLD WIDE SIRES

Grandson of World Class, Siemers Doc Hanan 28286 ET EX92

RRP \$28 +GST



08/2024 US Genomic Data Net Merit \$641 AB A2A2

Milk	+1526	81% R	Cheese M\$	647	Sire CE	2.4%
Fat	+45	-0.05%	SCS	+2.93	Gest. Len.	-1
Protein	+55	+0.03%	Mastitis	+0.8	Fert. Index	+0.9
PL	+2.7		Liveability	-1.9	CCR	+1.5
DPR	+0.3		Heifer Liv.	+0.8	HCR	+0.4

Sexed RRP \$65

NHD Sexed 58+ GST

PTAT + 3.11 UDC +2.60 FLC +1.50 TPI +2810

SIRE: Aija Wolfgang P

DAM: Siemers Lstr Hanan 33317 ET EX90

GDAM: Siemers Doc Hanan 28286 (pictured)

AUS Genomic Data 08/24 BPI 336

Milk	720	OT	107	
Protein kg	21	0.04%	MS	112
Fat Kg	21	-0.14%	FLC	102

HWI 301

ASI 130

Calving Ease	102	Cell Count	147
Survival	110	Mast. Res.	105
Daught Fert.	103	Heat Tol.	104

US Proof

SI 668



Milk Speed	102
Temp.	102
Likeability	104

AUS Proof



Stature	+3.24	Tall			
Strength	+0.60	Strong			
Body Depth	+1.97	Deep			
Dairy Form	+4.26	Open Rib			
Rump Angle	+0.40	Sloped			
Rump Width	+3.06	Wide			
Rear Leg SV	+1.73	Sickled			
Rear Leg RV	+2.08	Straight			
Foot Angle	+1.48	Steep			
Feet & Legs S	+2.18	High			
For Udder A	+2.63	Strong			
Rear Udder H	+4.31	High			
Rear Udder W	+4.30	Wide			
Udder Cleft	+2.61	Strong			
Udder Depth	+1.76	Shallow			
Front Teat P	+2.10	Close			
Rear Teat P	+2.70	Close			
Teat Length	+0.43	long			

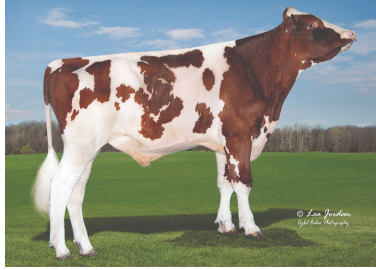
11

7HO17155

Network-Red x Perfect

EXCLUSIVE RED

Trent-way Exclusive Red ET



SIRE: Jimtown Network RED ET
DAM: Trent-way Essay ET VG87

RRP \$45

NHD Special \$40+ GST

08/2024 US Genomic Data Net Merit \$885 AB A2A2

Milk	+1068	81% R	Cheese M\$	897	Sire CE	1.8%
Fat	+89	+0.18%	SCS	+2.89	Gest. Len.	-3
Protein	+50	+0.06%	Mastitis	+2.0	Fert. Index	+1.5
PL	+4.8		Liveability	+1.0	CCR	+1.5
DPR	+0.7		Heifer Liv.	+0.8	HCR	+1.2

Sexed RRP \$80

NHD Sexed \$70+ GST

PTAT + 2.08 UDC +1.55 FLC +0.67 TPI +2955

AUS Genomic Data 08/24 BPI 389

Milk	438	OT	102	
Protein kg	17	0.01%	MS	103
Fat Kg	36	0.26%	FLC	99

HWI 403 ASI 156

Calving Ease	102	Cell Count	165
Survival	110	Mast. Res.	106
Daughter Fert.	112	Heat Tol.	94

US Proof

SI 674

AUS Proof



Milk Speed	100
Temp.	103
Likeability	104



			-1	1	2
Stature	+1.58	Tall			
Strength	+0.86	Strong			
Body Depth	+0.98	Deep			
Dairy Form	+1.44	Open Rib			
Rump Angle	+0.73	Sloped			
Thurl Width	+1.63	Wide			
Rear Leg SV	+0.70	Sickle			
Rear Leg RV	+1.50	Straight			
Foot Angle	+0.71	Steep			
Feet & Legs S	+0.83	High			
For Udder A	+1.85	Strong			
Rear Udder H	+2.44	High			
Rear Udder W	+2.32	Wide			
Udder Cleft	+0.91	Strong			
Udder Depth	+0.96	Shallow			
Front Teat P	+1.23	Close			
Rear Teat P	+1.10	Close			
Teat Length	-0.01	Short			



DAIRY FARMING MADE EFFICIENT, EAR BY EAR

CowManager measures behaviour combined with ear temperature in real-time, resulting in proactive heat, health and transition alerts. This way, you can focus on the cows who need you – and you don't have to disturb or stress out the ones who don't.



FIND OUT MORE

Find out more on www.cowmanager.com/australia.



WORLD WIDE SIRES

World Wide Sires Australia

T 0447 047 425

E pquinnan@wwsaustralia.com

www.wwsaustralia.com

734HO00162

Network-RED x AltaAltuve RC

RAEBAN RED

Trent-way Rae-Ban RED ET

CE

BB



jetstream

Exciting Red Bull from the Roxy Family

RRP \$35

NHD Special \$32+ GST



SIRE: Jimtown Network Network RED ET
DAM: Morningview 6603 ET

08/2024 US Genomic Data Net Merit \$860 BB A1A2

Milk	+1786	81% R	Cheese M\$	868	Sire CE	1.4%
Fat	+79	+0.04%	SCS	+2.82	Gest. Len.	-4
Protein	+62	+0.02%	Mastitis	+0.8	Fert. Index	+0.4
PL	+4.6		Liveability	+0.7	CCR	-0.1
DPR	+0.0		Heifer Liv.	+0.7	HCR	-0.5

Sexed RRP \$65 + GST

AUS Genomic Data 08/24 BPI 361

Milk	674	OT	103	
Protein kg	22	0.07%	MS	105
Fat Kg	32	0.04%	FLC	98

HWI 348 ASI 157

Calving Ease	102	Cell Count	171
Survival	109	Mast. Res.	105
Daughter Fert.	108	Heat Tol.	99

US Proof

SI 667

AUS Proof



Milk Speed	101
Temp.	103
Likeability	104



PTAT +1.89 UDC +1.09 FLC +0.48 TPI +2887

Stature	+1.60	Tall	-1	1	2
Strength	+1.07	Strong			
Body Depth	+1.17	Deep			
Dairy Form	+1.50	Open Rib			
Rump Angle	+0.39	High			
Thurl Width	+1.21	Wide			
Rear Leg SV	+0.92	Sickle			
Rear Leg RV	+1.03	Straight			
Foot Angle	+0.51	Steep			
Feet & Legs S	+0.76	High			
For Udder A	+1.22	Strong			
Rear Udder H	+2.00	High			
Rear Udder W	+2.16	Wide			
Udder Cleft	+0.62	Strong			
Udder Depth	+0.32	Shallow			
Front Teat P	+1.08	Close			
Rear Teat P	+0.85	Close			
Teat Length	-0.04	Short			

0200HO12855

Ranger RED x Parfect

LIFESTYLE RC

Fepro Lifestyle RC



SEMEX



SIRE: 3Star OH Ranger RED
DAM: Fepro Perfect Lindor VG86 2YR CAN

RRP \$35

NHD Special \$33+ GST

08/2024 US Genomic Data Net Merit \$586 BB A2A2

Milk	+583	81% R	Cheese M\$	601	Sire CE	2.7%
Fat	+71	+0.19%	SCS	+2.81	Gest. Len.	-1
Protein	+37	+0.07%	Mastitis	+2.0	Fert. Index	+0.5
PL	+3.3		Liveability	+0.0	CCR	+0.7
DPR	-0.4		Heifer Liv.	-0.3	HCR	+2.5

Sexed RRP55

NHD Sexed \$53 + GST

AUS Genomic Data 08/24 BPI 399

Milk	184	OT	109	
Protein kg	14	0.18%	MS	105
Fat Kg	39	0.45%	FLC	102

HWI 371 ASI 162

Calving Ease	102	Cell Count	167
Survival	108	Mast. Res.	109
Daught Fert.	107	Heat Tol.	99

US Proof

SI 656

AUS Proof



Milk Speed	103
Temp.	101
Likeability	105



PTAT +2.77 UDC +2.20 FLC +1.27 TPI +2806

Stature	+2.67	Tall	-1	1	2
Strength	+1.49	Strong			
Body Depth	+1.39	Deep			
Dairy Form	+1.48	Open Rib			
Rump Angle	+0.57	Sloped			
Rump Width	+2.27	Wide			
Rear Leg SV	+1.47	Sickle			
Rear Leg RV	+2.05	Straight			
Foot Angle	+1.68	Steep			
Feet & Legs S	+1.71	High			
For Udder A	+2.89	Strong			
Rear Udder H	+3.16	High			
Rear Udder W	+3.04	Wide			
Udder Cleft	+1.61	Strong			
Udder Depth	+2.29	Shallow			
Front Teat P	+1.48	Close			
Rear Teat P	+1.36	Close			
Teat Length	+0.43	Long			

13

94HO20383

Mecca P x Luster P

ZEUS PP

Redhouse Zeus PP ET



SIRE: SBG Mecca P
DAM: Redhouse 2179 Luster Rud Zip ET

RRP \$30

NHD Special \$28+ GST

08/2024 US Genomic Data		Net Merit \$773		AB	A1A2	
Milk	+957	79% R	Cheese M\$	788	Sire CE	2.3%
Fat	+88	+0.19%	SCS	+2.77	Gest. Len.	+1
Protein	+48	+0.07%	Mastitis	+0.4	Fert. Index	+1.3
PL	+3.3		Liveability	+0.4	CCR	+2.0
DPR	+1.1		Heifer Liv.	+0.3	HCR	+0.6

Sexed RRP \$70

NHD Sexed \$55+ GST

AUS Genomic Data 08/24 BPI 258

PTAT +1.71 UDC +1.84 FLC +0.85 TPI +2900

Milk	-150	OT	97	
Protein kg	2	0.12%	MS	101
Fat Kg	26	0.47%	FLC	104

Stature	+1.50	Tall	-1	1	2
Strength	+0.85	Strong			
Body Depth	+0.64	Deep			
Dairy Form	+0.80	Open Rib			
Rump Angle	+0.11	Sloped			
Rump Width	+1.06	Wide			
Rear Leg SV	-0.06	Posty			
Rear Leg RV	+1.16	Straight			
Foot Angle	+1.55	Steep			
Feet & Legs S	+1.05	High			
For Udder A	+2.10	Strong			
Rear Udder H	+2.30	High			
Rear Udder W	+2.25	Wide			
Udder Cleft	+1.59	Strong			
Udder Depth	+2.03	Shallow			
Front Teat P	+0.44	Close			
Rear Teat P	+1.21	Close			
Teat Length	-0.02	Short			

HWI 273

ASI 82

Calving Ease	102	Cell Count	153
Survival	106	Mast. Res.	106
Daught Fert.	110	Heat Tol.	104

US Proof

SI 320

AUS Proof



Milk Speed	103
Temp.	100
Likeability	102



CFP PP x Mission P RC

VITTORIA PP RED

Carenda Vittoria RED PP

PP

CE



A2A2

BB



Sire: Vogue CFP PP
Dam: Carenda Mission Vittoria VG86

RRP \$28

NHD Special \$26 + GST

BB A2A2

AUS Genomic Data 08/24		BPI 371		HWI 332		ASI 215		SI 687	
Milk	-95	Calving Ease	103	Cell Count	142	Milk Speed	101		
Protein kg	21	0.44%	Survival	106	Mast. Res.	105	Temp.	100	
Fat Kg	32	0.52%	Daught Fert.	107	Heat Tol.	94	Likeability	102	

Aus Genomics 08/24 OT: 100 MS:100 DS:100 FLC: 100

Stature	106	Rear Leg Rear View	105
Angularity	100	Bone Quality	100
Muzzle Width	101	Udder Texture	96
Chest Width	99	Udder Depth	104
Body Depth	99	For Attachment	100
Pin Set	101	Rear Attach Height	104
Pin Width	95	Rear Attach Width	104
Loin Strength	103	Centre Ligament	99
Heel Depth	96	For Teat Place	98
Foot Angle	99	Rear Teat Place	103
Rear Set	103	Teat Length	102

AUS Proof



0200HO12714

A2P2 x Delta-Lambda

LEYHIGH PP

Drewholme Leyhigh PP



SIRE: Vogue A2P2 PP

DAM:

Drewholme Lambda Leysure P VG 88 3YO CAN

AUS Genomic Data 08/24 BPI 350

Milk	70	OT	108
Protein kg	8	0.12%	MS 110
Fat Kg	34	0.45%	FLC 103

HWI 339 ASI 123

Calving Ease	103	Cell Count	148
Survival	110	Mast. Res.	104
Daught Fert.	107	Heat Tol.	104

US Proof

SI 524

AUS Proof



Milk Speed	104
Temp.	103
Likeability	106



RRP \$35 NHD Special \$30+ GST

08/2024 US Genomic Data Net Merit \$456 BB A1A2

Milk	+648	82% R	Cheese M\$	477	Sire CE	1.9%
Fat	+70	+0.17%	SCS	+2.87	Gest. Len.	0
Protein	+36	+0.06%	Mastitis	-1.0	Fert. Index	-0.9
PL	+0.9		Liveability	-3.2	CCR	-0.6
DPR	-1.4		Heifer Liv.	-0.5	HCR	-0.3

Sexed RRP \$65

NHD Sexed \$60+ GST

PTAT + 1.91 UDC +2.12 FLC +0.91 TPI +2603

			-1	1	2
Stature	+0.90	Tall			
Strength	+0.81	Strong			
Body Depth	+0.82	Deep			
Dairy Form	+0.66	Open Rib			
Rump Angle	+0.22	Sloped			
Rump Width	+1.46	Wide			
Rear Leg SV	-0.18	Posty			
Rear Leg RV	+1.33	Straight			
Foot Angle	+1.19	Steep			
Feet & Legs S	+0.93	High			
For Udder A	+2.91	Strong			
Rear Udder H	+2.58	High			
Rear Udder W	+2.55	Wide			
Udder Cleft	+1.07	Strong			
Udder Depth	+1.64	Shallow			
Front Teat P	+0.50	Close			
Rear Teat P	+0.62	Close			
Teat Length	-0.08	Short			

7HO17101

Ison-P x Luster P

KARMA PP

Coldsprings Karma PP ET



SIRE: Houin Perfect Ison P ET (pictured)

DAM: Coldsprings Luster P 11957 EX90

AUS Genomic Data 08/24 BPI 337

Milk	248	OT	101
Protein kg	13	0.12%	MS 102
Fat Kg	29	0.27%	FLC 96

HWI 347 ASI 151

Calving Ease	103	Cell Count	158
Survival	108	Mast. Res.	106
Daught Fert.	109	Heat Tol.	100

US Proof

SI 582



Milk Speed	101
Temp.	102
Likeability	104

RRP \$30 NHD Special \$28 + GST

08/2024 US Genomic Data Net Merit \$717 BB A2A2

Milk	+1084	70% R	Cheese M\$	733	Sire CE	2.7%
Fat	+64	+0.08%	SCS	+2.63	Gest. Len.	-0
Protein	+49	+0.06%	Mastitis	+2.1	Fert. Index	+1.5
PL	+5.2		Liveability	+0.7	CCR	+1.8
DPR	+0.0		Heifer Liv.	+1.0	HCR	+2.3

Sexed RRP \$60 + GST

PTAT + 2.68 UDC +2.17 FLC +1.49 TPI +2926

			-1	1	2
Stature	+2.28	Tall			
Strength	+1.47	Strong			
Body Depth	+1.29	Deep			
Dairy Form	+1.08	Open Rib			
Rump Angle	-0.63	High			
Rump Width	+2.45	Wide			
Rear Leg SV	+1.07	Sickled			
Rear Leg RV	+2.16	Straight			
Foot Angle	+1.60	Steep			
Feet & Legs S	+1.82	High			
For Udder A	+3.22	Strong			
Rear Udder H	+2.68	High			
Rear Udder W	+2.58	Wide			
Udder Cleft	+1.44	Strong			
Udder Depth	+2.86	Shallow			
Front Teat P	+0.48	Close			
Rear Teat P	+0.78	Close			
Teat Length	+0.79	Long			

Vision+™

Much more than just a genomic vision.
An Integrated PRECISION.

Vision+™ delivers exclusive genetic results, including:

Robotic Cow Index (RCI) for effective Robotic Milking

EcoFeed® scores for sustainable and profitable Feed Conversion Efficiency

Polled, Red, Muscle Weakness (MW) results among the standard markers

Along with **all genomic values reported** by CDN, Lactanet & CDCB and more...

Vision+™ empowers genomic results through Chromosomal Mating® and SStrategy™, with precision in genetic decisions, while controlling inbreeding, optimizing genetic gain and managing future herd inventory with an easy call to action.

Vision+™ is a strategic investment with testing options available to achieve the different needs of each herd and goals of every farmer:

20 Vision+™

Mating decisions for **replacement heifers** and sale/purchase decisions for your females

ABV

Make your decisions on **replacement heifers** and breeding strategies with **Australian** genomic data

75 Vision+™

Get maximum data of **high impact** AI sires, donor dams and key bloodlines

250HO15963

Perfect x Drastic P

ALADDIN P

AR-Joy CU Pari Aladdin P ET



SIRE: Siemers Rengd Perfect ET
DAM: AR-Joy CU Drast Apple P ET

RRP \$28

NHD Special \$25+ GST

08/2024 US Genomic Data		Net Merit \$796		BB	A1A2	
Milk	+1510	82% R	Cheese M\$	807	Sire CE	2.0%
Fat	+78	+0.07%	SCS	+2.92	Gest. Len.	-2
Protein	+63	+0.06%	Mastitis	+3.6	Fert. Index	+1.3
PL	+3.9		Liveability	-1.6	CCR	+1.4
DPR	-0.4		Heifer Liv.	+0.10	HCR	+1.9

Sexed RRP \$60

NHD Sexed \$55+ GST

PTAT + 1.73		UDC +2.02		FLC +0.37		TPI +2909	
				-1		1	2
Stature	+1.37	Tall					
Strength	+0.93	Strong					
Body Depth	+0.56	Deep					
Dairy Form	+0.67	Open Rib					
Rump Angle	+0.77	Sloped					
Rump Width	+2.14	Wide					
Rear Leg SV	-0.42	Posty					
Rear Leg RV	+1.18	Straight					
Foot Angle	+0.90	Steep					
Feet & Legs S	+0.47	High					
For Udder A	+2.56	Strong					
Rear Udder H	+2.68	High					
Rear Udder W	+2.37	Wide					
Udder Cleft	+1.00	Strong					
Udder Depth	+2.14	Shallow					
Front Teat P	+0.13	Close					
Rear Teat P	+0.75	Close					
Teat Length	0.21	Long					

AUS Genomic Data 08/24 BPI 448

Milk	825	OT	104	
Protein kg	30	0.15%	MS	102
Fat Kg	35	-0.01%	FLC	101

HWI 436

ASI 210

Calving Ease	103	Cell Count	157
Survival	111	Mast. Res.	105
Daught Fert.	112	Heat Tol.	89

US Proof

SI 875

AUS Proof



Milk Speed	102
Temp.	101
Likeability	105



ILLUMINATOR P

Numeralla Illuminator ET PO

A2P2 x Delta



Sire: Vogue A2P2 PP
Dam: Numeralla Delta 1427 VG85

RRP \$24

NHD Special \$22 + GST BB A2A2

AUS Genomic Data 08/24		BPI 468		HWI 434		ASI 223		SI 712	
Milk	-469	Calving Ease	103	Cell Count	153	Milk Speed	102		
Protein kg	13	0.49%	Survival	109	Mast. Res.	107	Temp.	102	
Fat Kg	45	0.94%	Daught Fert.	110	Heat Tol.	98	Likeability	104	

Aus Genomics 08/24 OT: 107 MS:107 DS:104 FLC: 100

Stature	103	Rear Leg Rear View	106
Angularity	103	Bone Quality	102
Muzzle Width	103	Udder Texture	97
Chest Width	103	Udder Depth	104
Body Depth	103	For Attachment	107
Pin Set	103	Rear Attach Height	106
Pin Width	102	Rear Attach Width	107
Loin Strength	103	Centre Ligament	102
Heel Depth	99	For Teat Place	100
Foot Angle	98	Rear Teat Place	101
Rear Set	101	Teat Length	100

AUS Proof



BACKPOCKET SIRES

Scan QR Codes for Bull Company Page & Aus Proof

29HO21135

GRENADE

Denovo 2404 Grenade ET
Golden x Taos

BB



NHD Special \$19 + GST
+Production & Wide Teat Placement



0200HO13058

HI-PRAISE

Beyond Hi-Praise ET
Hayk x Deluxe



A2A2



NHD Special Sexed \$55 + GST
BPI 541 + High Aus Type + Daughter Fertility



TLGLIONIZE

LIONIZE PP

Summit View Nipit Lionize PP
Nipit PP x Luster P

A2A2



NHD Special \$20 + GST
NHD Sexed Special \$55 + GST



STGTHUNDER

THUNDER

STgen Thunder
Tampa x Achiever

A2A2

BB

CE



RRP \$18 + GST **Sexed \$48 + GST**
1.5 Calving Ease + Production



TLGTURBO

TURBO

Wilara Turbo
Endgame x Delta Lambda



RRP \$18

Strong & BLACK



STGLUSTAPPLE

LUSTAPPLE PP

STGen Lustapple PP
Lustrous PP x Captain

A2A2



RRP \$18 + GST **Sexed \$48 + GST**
POLLED + Production + Type



ALL OTHER BREEDS AVAILABLE

AYRSHIRE



GUERNSEY



BROWN SWISS



MONTBELIARDE



DAIRY SHORTHORN



KIWI FRIESIAN



VIKHKLIM

VH KALIF x Semino

VH KLIM

VIKINGGENETICS
powered by

VH Kalif Klim

RRP \$28 NHD Special \$26 + GST

BB A2A2



Sire: VH Kalif

AUS Proof



RRP \$58 X-V Sexed \$57 + GST

AUS Genomic Data 08/24 BPI 444 HWI 381

Milk	-150	OT	110	Calving Ease	103	
Protein kg	28	0.61%	MS	102	Survival	109
Fat Kg	23	0.43%	FLC	109	Daught Fert.	104

ASI 250 SI 886

Cell Count	149	Milk Speed	99
Mast. Res.	107	Temp.	101
Heat Tol.	93	Likeability	102

+Long Teats
Slopes Rumps
Open Muzzle & Chest Width



551HO05892

Buffalo Bill x Perfect

HALO

STgen Halo



STgenetics

RRP \$25 NHD Special \$24 + GST

US Proof



Sire: Genosource Buffalo Bill

Dam: AOT Perfect 11605



AUS Genomic Data 08/24 BPI 409

Milk	402	OT	101	
Protein kg	17	0.11%	MS	104
Fat Kg	25	0.11%	FLC	99

RRP Ultra+ Sexed \$60 + GST

HWI 481 ASI 133 SI 697 AUS Proof

Calving Ease	102	Cell Count	157	Milk Speed	102
Survival	109	Mast. Res.	106	Temp.	101
Daught Fert.	118	Heat Tol.	98	Likeability	103



08/2024 US Genomic Data Net Merit \$895 AB A2A2

Milk	+1586	80% R	Cheese M\$	904	Sire CE	2.2%
Fat	+93	+0.12%	SCS	+2.88	Gest. Len.	-1
Protein	+93	+0.04%	Mastitis	+2.4	Fert. Index	+1.3
PL	+4.9		Liveability	-0.3	CCR	+1.3
DPR	-0.1		Heifer Liv.	+0.4	HCR	+3.3

08/2024 US Genomic Type Data

		0	1	2
PTAT	1.77			
UDC	2.16			
FLC	1.13			

Slopes Rumps
Great Udders



0200HO12090

Einstein x Juicy

SUGARHIGH



Fly-Higher Sugarhigh-ET

RRP \$28 NHD Special \$26 + GST

US Proof



Sire: Silverridge V Einstein

Dam: Kellyyog-Bay Juicy Sugar



AUS Genomic Data 08/24 BPI 333

Milk	547	OT	102	
Protein kg	19	0.09%	MS	108
Fat Kg	26	0.03%	FLC	102

Sexed \$60 + GST

HWI 315 ASI 139 SI 641 AUS Proof

Calving Ease	103	Cell Count	167	Milk Speed	102
Survival	107	Mast. Res.	105	Temp.	102
Daught Fert.	104	Heat Tol.	92	Likeability	104



08/2024 US Genomic Data Net Merit \$1007 AB A2A2

Milk	+1840	85% R	Cheese M\$	1022	Sire CE	2.6%
Fat	+86	+0.06%	SCS	+2.80	Gest. Len.	-1
Protein	+74	+0.06%	Mastitis	+3.2	Fert. Index	+1.3
PL	+4.8		Liveability	+0.4	CCR	+1.6
DPR	+0.4		Heifer Liv.	+1.1	HCR	+1.5

08/2024 US Genomic Type Data

		0	1	2
PTAT	1.87			
UDC	2.21			
FLC	-0.03			

A2A2

Amazing Semen fertility!

VIKHSANPPRC

Sauna PP x Builder PP

VH SAN PP RC

VIKINGGENETICS
powered by

VH SAUNA PRC SANPPRC

RRP \$30 NHD Special \$28 + GST

BB A2A2



Sire: Hul-Stein Sauna PP RF

AUS Proof



RRP X-V Sexed \$60 + GST

AUS Genomic Data 08/24 BPI 441 HWI 371

Milk	-22	OT	101	Calving Ease	103	
Protein kg	26	0.5%	MS	101	Survival	107
Fat Kg	39	0.58%	FLC	96	Daught Fert.	104

ASI 258 SI 827

Cell Count	155	Milk Speed	101
Mast. Res.	109	Temp.	101
Heat Tol.	92	Likeability	103



Outcross Homozygous Polled Sire



Red River

AUTHENTIC AUSSIE KNOW HOW
BUILT TO LAST



DESIGN, DELIVERY &
INSTALLATION



• **Cattle Yards** • **Cattle Handling Equipment**

Northern Victoria:

Hamish Hooper - 0428 563 091

South Australia:

Kent Llewellyn - 0417 821 179

Western District:

Dylan Jewell - 0408 528 823

QUALITY BEEF SIRES

LANDFALL SUMMIT S1944



NHD SPECIAL \$18

- Low birth weight
- Excellent calving ease
- High Growth pattern 200 - 600 day
- Short Gestation
- Greenham approved sire

	CED	CEM	GL	BW	200D	400D	600D	MCW	MILK	DTC	DOC	NFI-F	CWT	EMA	RIB	RUMP	RBV	IMF
EBV	+6.6	+5.4	-6	+3.3	+52	+108	+143	+121	+24	-5.4	+20	+0.49	+73	+10.1	+2.2	+2.5	-0.2	+4.3
% Rank	14	25	26	34	43	12	10	22	9	32	50	78	36	14	11	11	84	10

ALLENDALE TRUE BLUE T325



NHD SPECIAL \$18

- Low birth weight & good calving ease
- Top 25% of breed for 200 - 600 day growth
- Short gestation length
- Top 15% for Docility
- High IMF and Eye Muscle, Greenham approved sire

	CED	CEM	GL	BW	200D	400D	600D	MCW	MILK	DTC	DOC	NFI-F	CWT	EMA	RIB	RUMP	RBV	IMF
EBV	+6.3	5.8	-6.2	+2.6	+62	+107	+143	+123	+20	-6.2	+31	-0.51	+84	+9.2	-1.3	-0.3	+0.1	+4.5
% Rank	16	21	23	21	10	13	10	21	28	18	14	3	11	20	77	49	71	8

SITZ STELLAR 726D



NHD SPECIAL \$25

- Low birth weight with good calving ease
- High 400 & 600 day weights, top 15% of the breed
- Top 10% of breed for rib and rump fat
- Reliable data = use with confidence. Very Popular
- Good Docility

	CED	CEM	GL	BW	200D	400D	600D	MCW	MILK	DTC	DOC	NFI-F	CWT	EMA	RIB	RUMP	RBV	IMF
EBV	+4.9	7.2	-9.2	+2.6	+57	+108	+139	+125	+12	-7.7	+25	+0.35	+55	+3.1	+5.2	+4.0	-0.4	+1.3
	27	11	3	21	22	11	13	18	83	4	30	65	83	85	1	4	89	74

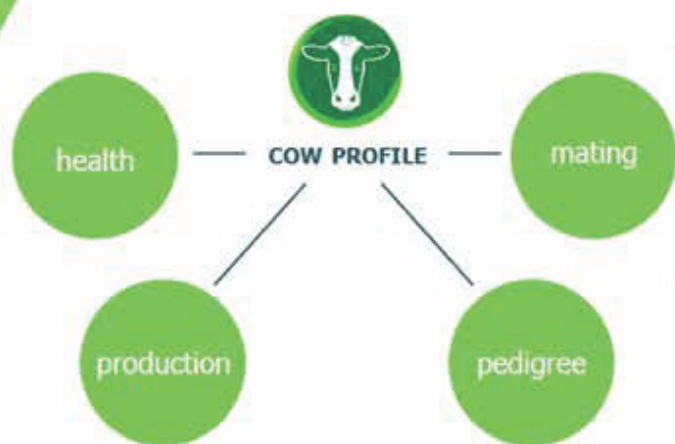
MISTRO

Farm



Farm Management Software

- Maintain a complete stock register and store all herd recording, mating and health information.
- Generate reports and view on screen 'profiles' for individual animals.
- Generate graphs of herd test results and production details.
- Store and generate data on individual cows including health, production, pedigree and mating
- Automatic data transfer to Herd Test Centre



Freecall Helpdesk

A freecall helpdesk is available to all MISTRO users

1800 451 451

www.mistro.ag

29JE4522

Jerónimo x Invincible



CSC BRADY

Kaarmona Jerónimo Brady



RRP \$32 **NHD Special \$28 + GST**

AUS Genomic Data 08/24 BPI 423 HWI 269 ASI 272 SI 903

Milk	535	Calving Ease		Cell Count	123	Milk Speed	102	
Protein kg	35	0.36%	Survival	110	Mast. Res.	103	Temp.	106
Fat Kg	39	0.19%	Daught Fert.	95	Heat Tol.	97	Likeability	108

Aus Genomics 08/24

OT: 112 MS:110

Stature	108	Rear Leg Rear View	102
Angularity	110	Bone Quality	100
Muzzle Width	107	Udder Texture	105
Chest Width	104	Udder Depth	101
Body Depth	104	For Attachment	107
Body Length	106	Rear Attach Height	108
Pin Set	101	Rear Attach Width	106
Pin Width	103	Centre Ligament	98
Rump Length	106	For Teat Place	109
Loin Strength	101	Rear Teat Place	101
Foot Angle	102	Teat Length	96
Rear Set	97		



A2A2

Sire: Sun Valley Marcin Jerónimo ET
Dam: Kaarmona Invincible Babe 323 EX92

AUS Proof



7JE02120

Bancroft x Lexicon

BIG RED

Victory Rhondas Big Red ET



WORLD WIDE SIRES

RRP \$20

AUS Genomic Data 08/24 BPI 218 HWI 180 ASI 100 SI 477

Milk	175	Calving Ease		Cell Count	127	Milk Speed	102	
Protein kg	14	0.16%	Survival	107	Mast. Res.	106	Temp.	101
Fat Kg	11	0.03%	Daught Fert.	99	Heat Tol.	97	Likeability	103

Aus Genomics 08/24

OT: 101 MS:103

Stature	103	Rear Leg Rear View	98
Angularity	101	Bone Quality	103
Muzzle Width	99	Udder Texture	99
Chest Width	94	Udder Depth	102
Body Depth	95	For Attachment	102
Body Length	100	Rear Attach Height	104
Pin Set	98	Rear Attach Width	100
Pin Width	96	Centre Ligament	102
Rump Length	100	For Teat Place	100
Loin Strength	96	Rear Teat Place	103
Foot Angle	99	Teat Length	101
Rear Set	95		



Sire: Ahlem Axis Bancroft ET
Dam: Suessex Lexicon Rhonda - USA
(pictured)

Sexed RRP \$ 50

NHD Sexed \$48+ GST

AUS Proof



A2A2

23

EXQUISITE P



Wallacedale Exquisite P



RRP \$20 +GST

AUS Genomic Data 08/24 BPI 302 HWI 250 ASI 150 SI 624

Milk	315	Calving Ease		Cell Count	114	Milk Speed	104	
Protein kg	19	0.17%	Survival	109	Mast. Res.	100	Temp.	106
Fat Kg	24	0.13%	Daught Fert.	101	Heat Tol.	97	Likeability	106

Aus Genomics 08/24 OT: 106 MS:105

Stature	103	Rear Leg Rear View	103
Angularity	106	Bone Quality	102
Muzzle Width	100	Udder Texture	106
Chest Width	102	Udder Depth	101
Body Depth	101	For Attachment	103
Body Length	102	Rear Attach Height	104
Pin Set	104	Rear Attach Width	103
Pin Width	111	Centre Ligament	100
Rump Length	103	For Teat Place	104
Loin Strength	109	Rear Teat Place	102
Foot Angle	107	Teat Length	104
Rear Set	99		

Sire: Wallacedale Gold Band P
Dam: Wallacedale Lemon Melanie EX 92

Sexed RRP \$55 +GST

AUS Proof



0200JE01430

Latitude x Thrasher

MONKEES



Vierra Monkees ET



RRP \$25
NHD Special \$24 + GST

SIRE: TOG Latitude ET
DAM: Vierra Mia VG 87 YR USA

Sexed RRP \$50 +GST

AUS Genomic Data 08/24 BPI 342 HWI 273 ASI 214

Milk	229	Calving Ease		Cell Count	132	
Protein kg	26	0.4%	Survival	106	Mast. Res.	104
Fat Kg	27	0.27%	Daught Fert.	102	Heat Tol.	96

Aus Genomics 08/24

OT: 103 MS:103

Stature	104	Rear Leg Rear View	100
Angularity	102	Bone Quality	100
Muzzle Width	101	Udder Texture	100
Chest Width	103	Udder Depth	99
Body Depth	99	For Attachment	100
Body Length		Rear Attach Height	103
Pin Set	102	Rear Attach Width	99
Pin Width	104	Centre Ligament	103
Rump Length		For Teat Place	104
Loin Strength	102	Rear Teat Place	105
Foot Angle	102	Teat Length	104
Rear Set	99		

SI 711

Milk Speed	100
Temp.	102
Likeability	103

AUS Proof



Izuku x Tahbilk

VENTURA



Loxleigh Izuku Ventura



RRP \$25
NHD Special \$22 + GST

SIRE: Loxleigh Oliver Izuku
DAM: Loxleigh Tahbilk Vanessa 6904 Ex92

Sexed RRP \$56 +GST

AUS Genomic Data 08/24 BPI 295 HWI 184 ASI 154

Milk	610	Calving Ease		Cell Count	115	
Protein kg	22	0.03%	Survival	108	Mast. Res.	104
Fat Kg	26	-0.12%	Daught Fert.	96	Heat Tol.	99

Aus Genomics 08/24

OT: 111 MS:110

Stature	106	Rear Leg Rear View	103
Angularity	104	Bone Quality	101
Muzzle Width	112	Udder Texture	104
Chest Width	107	Udder Depth	100
Body Depth	109	For Attachment	106
Body Length	101	Rear Attach Height	109
Pin Set	102	Rear Attach Width	105
Pin Width	107	Centre Ligament	107
Rump Length	102	For Teat Place	104
Loin Strength	107	Rear Teat Place	106
Foot Angle	105	Teat Length	100
Rear Set	99		

SI 603

Milk Speed	101
Temp.	106
Likeability	107

AUS Proof



WHISTMEL

Craigielea Whistling Mel



RRP \$25 **NHD Special \$23+ GST**

AUS Genomic Data 08/24 BPI 337 HWI 246 ASI 155 SI 643

Milk	291	Calving Ease		Cell Count	124	Milk Speed	102	
Protein kg	16	0.14%	Survival	111	Mast. Res.	104	Temp.	104
Fat Kg	33	0.33%	Daught Fert.	97	Heat Tol.	103	Likeability	106

Aus Genomics 08/24 OT: 107 MS:112

Stature	109	Rear Leg Rear View	103
Angularity	107	Bone Quality	104
Muzzle Width	105	Udder Texture	109
Chest Width	101	Udder Depth	101
Body Depth	99	For Attachment	106
Body Length	108	Rear Attach Height	110
Pin Set	111	Rear Attach Width	105
Pin Width	113	Centre Ligament	111
Rump Length	108	For Teat Place	104
Loin Strength	105	Rear Teat Place	103
Foot Angle	99	Teat Length	101
Rear Set	99		

Sire: Ahlem Whistler
Dam: Craigielea Melys 5748 EX 90 (pictured)

Sexed RRP \$ 55 +GST

AUS Proof



7JE01726

Craze x Pflex (5)

STARLORD

Primus Craze Starlord



RRP \$30
NHD Special \$28 + GST

SIRE: River Valley Circus Craze
DAM: JX Ahlem Plex Showgirl - USA

RRP \$60
Sexed \$55+ GST

DAUGHTER PROVEN

AUS Genomic Data 08/24 BPI 386 HWI 400 ASI 86

Milk	470	Calving Ease		Cell Count	149	
Protein kg	10	-0.14%	Survival	115	Mast. Res.	106
Fat Kg	29	0.07%	Daught Fert.	107	Heat Tol.	102

Aus Genomics 08/24

OT: 107 MS:109

Stature	104	Rear Leg Rear View	102
Angularity	101	Bone Quality	101
Muzzle Width	103	Udder Texture	106
Chest Width	101	Udder Depth	107
Body Depth	100	For Attachment	107
Body Length	99	Rear Attach Height	106
Pin Set	104	Rear Attach Width	105
Pin Width	103	Centre Ligament	105
Rump Length	98	For Teat Place	105
Loin Strength	111	Rear Teat Place	104
Foot Angle	109	Teat Length	107
Rear Set	98		

SI 696

Milk Speed	102
Temp.	105
Likeability	108

AUS Proof



TLGIRYMPLE

Roulette x Valentino

IRYMPLE

Loxleigh Roulette Irymple



RRP \$24
NHD Special \$20 + GST

SIRE: Cairnbrae Roulette
DAM: Loxleigh Valent Iris 6809 EX90

RRP \$60
Sexed \$55+ GST

AUS Genomic Data 08/24 BPI 351 HWI 271 ASI 184

Milk	395	Calving Ease		Cell Count	120	
Protein kg	22	0.18%	Survival	109	Mast. Res.	102
Fat Kg	33	0.22%	Daught Fert.	101	Heat Tol.	97

Aus Genomics 08/24

OT: 110 MS:110

Stature	108	Rear Leg Rear View	98
Angularity	109	Bone Quality	104
Muzzle Width	108	Udder Texture	106
Chest Width	103	Udder Depth	101
Body Depth	102	For Attachment	102
Body Length	105	Rear Attach Height	106
Pin Set	105	Rear Attach Width	108
Pin Width	107	Centre Ligament	109
Rump Length	104	For Teat Place	107
Loin Strength	102	Rear Teat Place	108
Foot Angle	105	Teat Length	99
Rear Set	97		

SI 682

Milk Speed	102
Temp.	104
Likeability	106

AUS Proof



VR VESTY

VIKRVESTY

VR Vimo x VR Froberg



A2A2

VIKINGGENETICS
innovative breeding



RRP \$35

AUS Genomic Data 08/24 BPI 56 HWI 236 ASI 291 SI 666

Milk	-117	Calving Ease		Cell Count	129	Milk Speed	103
Protein kg	23 0.5%	Survival	102	Mast. Res.	102	Temp.	101
Fat Kg	59 0.93%	Daught Fert.	99	Heat Tol.		Likeability	103

Aus Genomics 08/24

OT: 106 MS:104

Stature	103	Rear Leg Rear View	101
Angularity	100	Bone Quality	102
Muzzle Width	101	Udder Texture	102
Chest Width	101	Udder Depth	104
Body Depth	101	For Attachment	104
Body Length		Rear Attach Height	104
Pin Set	92	Rear Attach Width	100
Pin Width	100	Centre Ligament	104
Loin Strength	100	For Teat Place	102
Heel Depth	100	Rear Teat Place	102
Foot Angle	99	Teat Length	99
Rear Set	98		

RRP X-V Sexed \$70



AUS Proof



Primestad-P x VR Faber

ARB NORMAN

GenetOcs AUSTRALIA

Oaklands Pastoral Norman

RRP \$26



AUS Proof



RRP Sexed \$56

AUS Genomic Data 08/24 BPI 268 HWI 198 ASI 216

Milk	290	Calving Ease		Cell Count	101
Protein kg	31 0.44%	Survival	105	Mast. Res.	99
Fat Kg	15 0.04%	Daught Fert.	101	Heat Tol.	

Aus Genomics 08/24

OT: 101 MS:100

SI 652

Stature	104	Rear Leg Rear View	99
Angularity	97	Bone Quality	98
Muzzle Width	101	Udder Texture	99
Chest Width	100	Udder Depth	99
Body Depth	98	For Attachment	98
Body Length		Rear Attach Height	101
Pin Set	102	Rear Attach Width	100
Pin Width	101	Centre Ligament	101
Loin Strength	101	For Teat Place	99
Heel Depth	96	Rear Teat Place	101
Foot Angle	97	Teat Length	103
Rear Set	101		

Milk Speed	101
Temp.	104
Likeability	103

Onstad P x V Foske

ARBSKEETA

GenetOcs AUSTRALIA

Johville Park Skeeta

RRP \$26



AUS Proof



RRP Sexed \$55

AUS Genomic Data 08/24 BPI 285 HWI 191 ASI 247

Milk	2477	Calving Ease		Cell Count	97
Protein kg	31 0.34%	Survival	105	Mast. Res.	97
Fat Kg	38 0.26%	Daught Fert.	99	Heat Tol.	

Aus Genomics 08/24

OT: 105 MS:106

SI 665

Stature	105	Rear Leg Rear View	104
Angularity	102	Bone Quality	97
Muzzle Width	106	Udder Texture	103
Chest Width	105	Udder Depth	97
Body Depth	104	For Attachment	101
Body Length		Rear Attach Height	103
Pin Set	101	Rear Attach Width	108
Pin Width	106	Centre Ligament	106
Loin Strength	104	For Teat Place	102
Heel Depth	103	Rear Teat Place	106
Foot Angle	101	Teat Length	105
Rear Set	99		

Milk Speed	101
Temp.	103
Likeability	105



A2A2



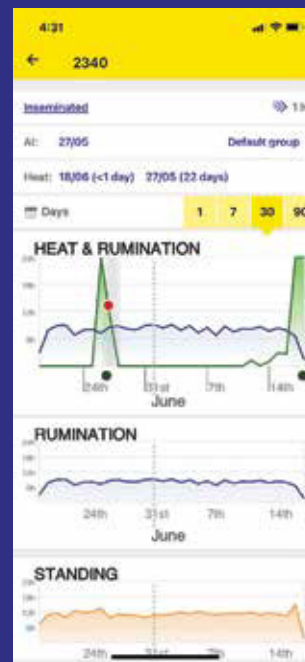
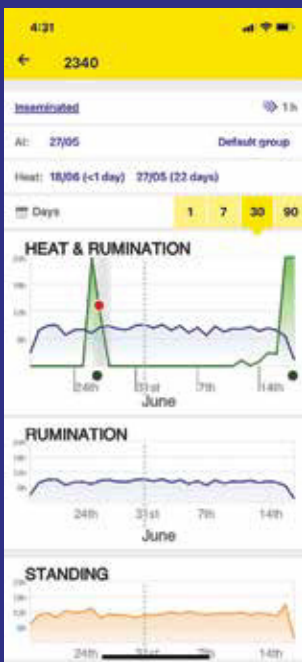
A2A2

Monitor Heat and Health From Wherever You Are.

Tru-Test™
DATAMARS

Active Tag

**Highly accurate Heat detection
Better animal health 365-days a year
Best in class Gateway Ruminant / Feeding**



View heat and health data history on individual animals or groups.

Easily print or download reports and graphs in common file formats.

Distributed by Genetics Australia.

Genetocs
AUSTRALIA
Breeding better Australian herds

**Contact our Tru-Test Active Tag Specialist
Rodney Brooks 0408 741 034**

Gerard Brislin 0408 107 019
Coleman Baulch 0429 473
563 Jon Holland 0412 848
505 Mat Dennis 0467 027
178

NORTHERN VICTORIA, WESTERN VICTORIA AND SOUTH AUSTRALIA

NHD Cohuna

44 Western Road, Cohuna Vic 3568
Phone: 03 5456 2366
Email: info@nationalherd.com.au

SALES

Stewart Mancer 0429 882 201
Emily Robins 0488 171 379
Gilberto Dayag 0427 887 950
Jude Yerex 0438 588 783

NHD Terang

41-43 High Street, Terang Vic 3264
Phone: 03 5592 1177
Email: terang@nationalherd.com.au

SITE SUPERVISOR:

Maree Condon 0419 500 474
Email: maree.condon@nationalherd.com.au

SALES

Dylan Jewell 0408 528 823
Phil McLauchlan 0438 355 132
Shae De Francesco 0408 595 765

NHD Mount Gambier

4 Pyne Close, Mount Gambier SA 5290
Phone: 0418 808 682
Email: mtgambier@nationalherd.com.au

SALES

Dylan Jewell 0408 528 823

NHD Wangaratta

9 Browning Street, Wangaratta Vic 3676
Phone: 03 5722 4422
Email: wangaratta@nationalherd.com.au

SALES

Stewart Mancer 0429 882 201

NHD Kyabram

62 McEwen Road, Kyabram Vic 3619
Phone: 03 5852 2455
Email: herdrecord@nationalherd.com.au Toll
Free: 1300 650 853

NHD Murray Bridge

98 Eleanor Terrace, Murray Bridge SA 5253
Phone: 08 8532 1392
Email: murraybridge@nationalherd.com.au

NHD South Australia Manager:

Kent Llewellyn 0417 821 179
Email: kent.llewellyn@nationalherd.com.au

SALES

Kent Llewellyn 0417 821 179
David Peglar 0409 547 212
Stuart Graetz 0427 477 717
Kylie Borchers 0476 813 920
Justin Ruckenstuhl 0428 844 922

NHD Yankalilla

Lot 2 Mary Street, Yankalilla SA 5203
Email: yankalilla@nationalherd.com.au

GIPPSLAND AND WESTERN VICTORIA

HICO Artificial Breeding and Semen Sales Manager

David Dunlop 0400 484 296
Email: ddunlop@hico.com.au

HICO Maffra

2 Foster Street, Maffra 3860
PH: 5147 1633
Email: info.maffra@hico.com.au

SITE SUPERVISOR:

Joanne De Moel 0428 223 455
Email: jdemoel@hico.com.au

SALES

Darryn Lunn 0427 551 832

HICO Colac

2/345 Princes Hwy, Colac West 3250
PH: 5231 5166
Email: rwhite@hico.com.au

SITE SUPERVISOR:

Terry Kavenagh 0429 021 138
Email: tkavenagh@hico.com.au

SALES

Rhiannon White 0457 754 811

HICO KORUMBURRA

33 Station Street, Korumburra 3950
PH: 5658 1311
Email: info.sfhgipps@hico.com.au

SITE SUPERVISOR:

Lessa Wade 0475 060 121
Email: lwade@hico.com.au

SALES

David Dunlop 0400 484 296
David Anderson 0488 636 049
John de Win 0409 082 840

HICO Warragul

18A Pearse Street, Warragul 3820
PH: 5623 2207
Email: warragul.ht@hico.com.au

SALES

John Blum 0409 551 833